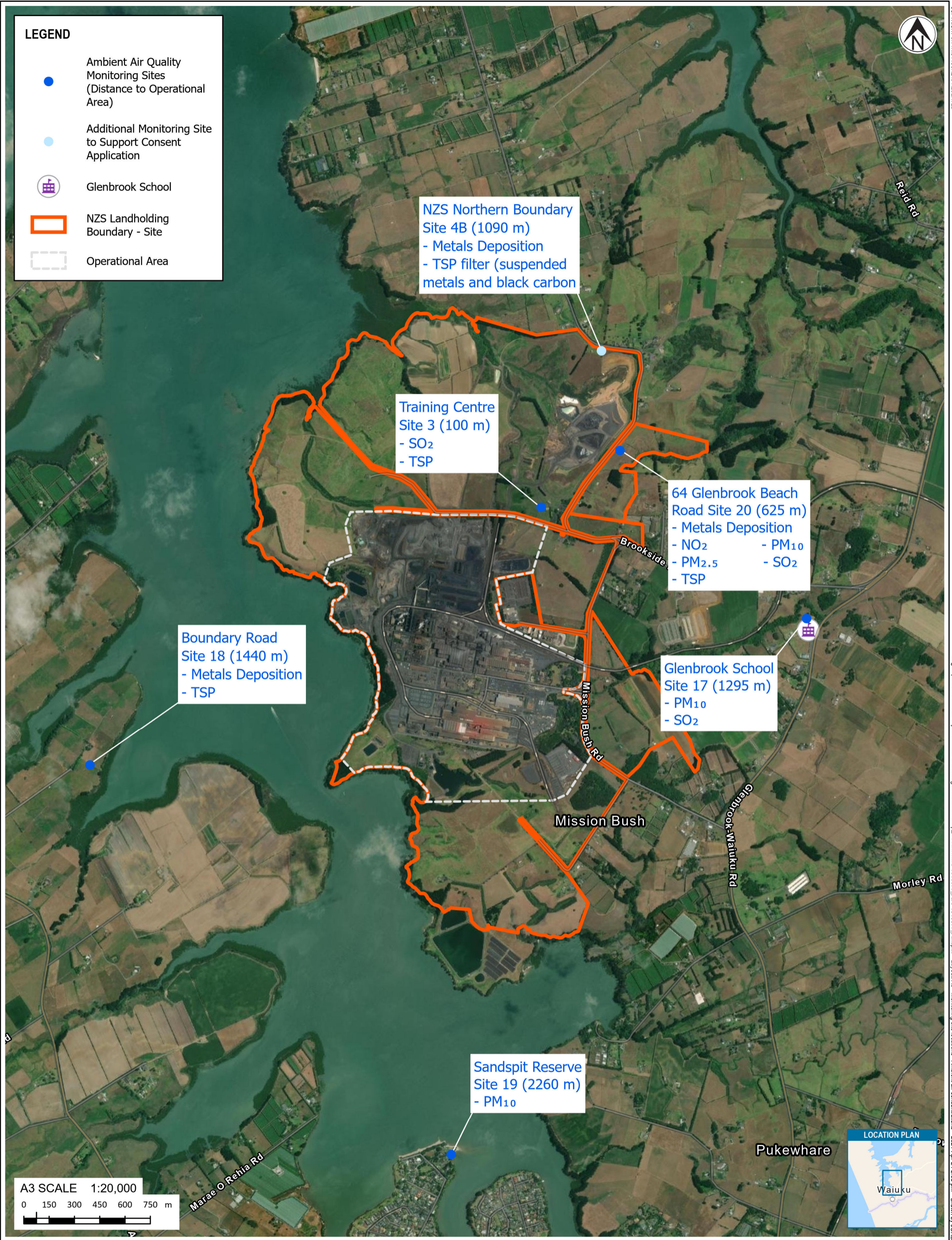


COPYRIGHT ON THIS FIGURE IS RESERVED  
 \\group.localfiles\KQI\Projects\1010577\WorkingMaterial\GISMap\_Document\IP\1010577\_Air\prj\1010577\_Air.aprx Layout: A5 - Monitoring site locations - Ambient air concentrations 2021-Apr-21 2:08 pm Drawn by JORB



**LEGEND**

- Ambient Air Quality Monitoring Sites (Distance to Operational Area)
- Additional Monitoring Site to Support Consent Application
- Glenbrook School
- NZS Landholding Boundary - Site
- Operational Area

NZS Northern Boundary Site 4B (1090 m)  
 - Metals Deposition  
 - TSP filter (suspended metals and black carbon)

Training Centre Site 3 (100 m)  
 - SO<sub>2</sub>  
 - TSP

64 Glenbrook Beach Road Site 20 (625 m)  
 - Metals Deposition  
 - NO<sub>2</sub> - PM<sub>10</sub>  
 - PM<sub>2.5</sub> - SO<sub>2</sub>  
 - TSP

Glenbrook School Site 17 (1295 m)  
 - PM<sub>10</sub>  
 - SO<sub>2</sub>

Boundary Road Site 18 (1440 m)  
 - Metals Deposition  
 - TSP

Sandspit Reserve Site 19 (2260 m)  
 - PM<sub>10</sub>

A3 SCALE 1:20,000  
 0 150 300 450 600 750 m



**Tonkin+Taylor**  
 www.tonkintaylor.co.nz  
 Exceptional thinking together

<b>NOTES:</b> Basemap: Sourced from LINZ and licensed for reuse under Creative Commons 4.0.				<b>PROJECT No.</b> 1010577		
		<b>DESIGNED</b>	JORB	APR.21		
		<b>DRAWN</b>	JORB	APR.21		
		<b>CHECKED</b>	MOLI	APR.21		
0	First version	JORB	MOLI	20/04/21		22/04/2021
<b>REV</b>	<b>DESCRIPTION</b>	<b>GIS</b>	<b>CHK</b>	<b>DATE</b>	<b>APPROVED</b>	<b>DATE</b>

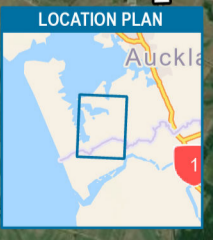
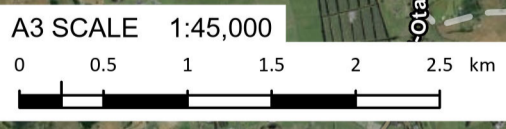
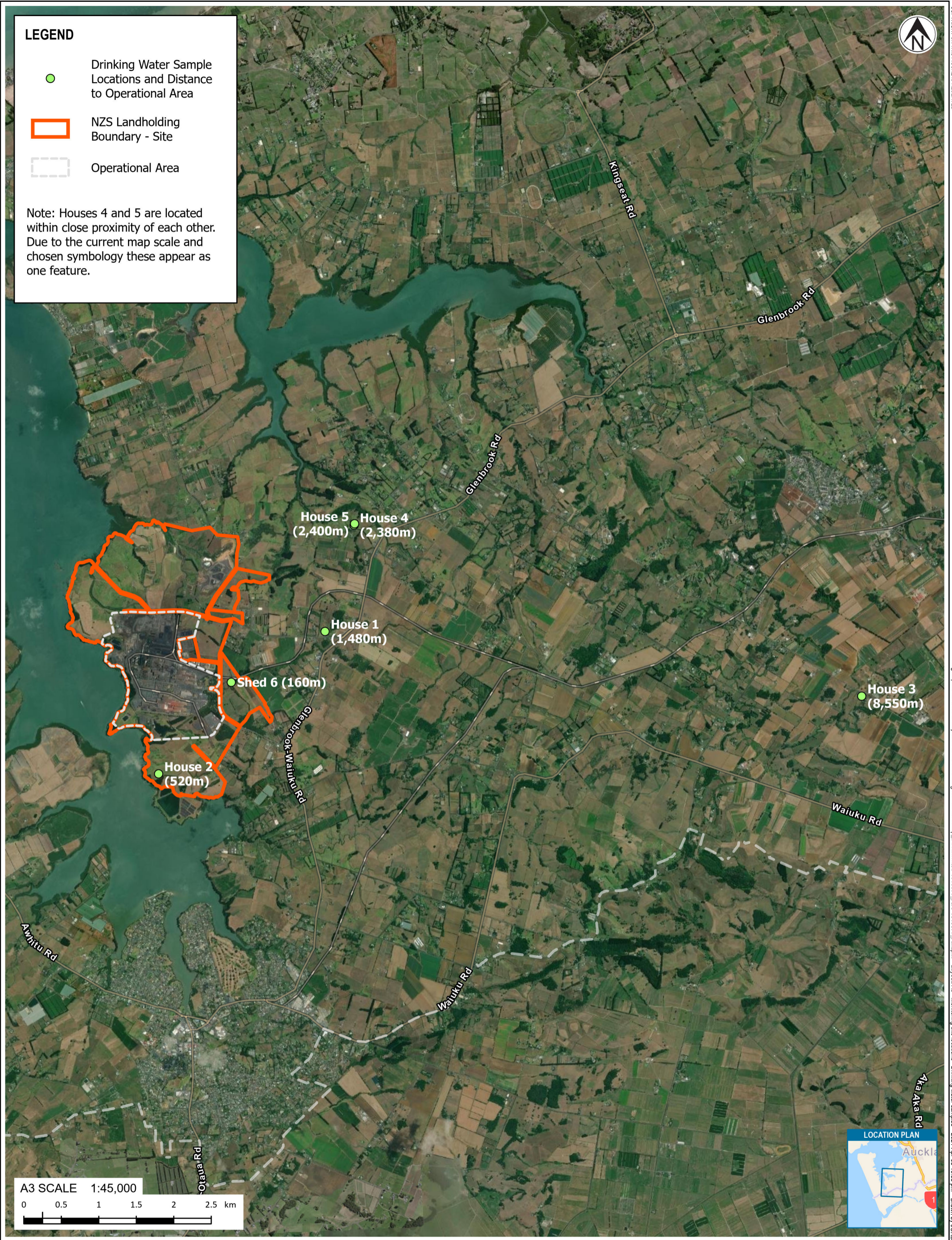
<b>CLIENT</b> NZ STEEL	<b>SCALE (A3)</b> 1:20,000	<b>FIG No.</b> FIGURE A5	<b>REV</b> 0
<b>PROJECT</b> RECONSENTING GLENBROOK STEEL MILL			
<b>TITLE</b> AMBIENT AIR MONITORING SITE LOCATIONS			



**LEGEND**

- Drinking Water Sample Locations and Distance to Operational Area
- NZS Landholding Boundary - Site
- Operational Area

Note: Houses 4 and 5 are located within close proximity of each other. Due to the current map scale and chosen symbology these appear as one feature.



**Tonkin+Taylor**  
 www.tonkintaylor.co.nz  
 Exceptional thinking together

**NOTES:**  
 Basemap: Sourced from LINZ and licensed for reuse under Creative Commons 4.0.

0	First version	JORB	MOLI	16/04/21
REV	DESCRIPTION	GIS	CHK	DATE

<b>PROJECT No.</b> 1010577	
<b>DESIGNED</b>	JORB APR.21
<b>DRAWN</b>	JORB APR.21
<b>CHECKED</b>	MOLI APR.21
<i>[Signature]</i> 22/04/2021	
APPROVED	DATE

<b>CLIENT</b> NZ STEEL	<b>SCALE (A3)</b> 1:45,000	<b>FIG No.</b> FIGURE A6	<b>REV</b> 0
<b>PROJECT</b> RECONSENSING GLENBROOK STEEL MILL			
<b>TITLE</b> DRINKING WATER SAMPLING LOCATIONS			



**NOTES:**  
 Basemap World Navigation Map: LINZ, Stats NZ, Eagle Technology, Esri, HERE, Garmin, FAO, METI/NASA, USGS. World Imagery: LINZ. Hybrid Reference Layer: Esri Community Maps Contributors, LINZ, Stats NZ, Eagle Technology, Esri, HERE, Garmin, METI/NASA, USGS. Hybrid Reference Layer\_NZ Steel: LINZ, Stats NZ, Eagle Technology, Esri, HERE, Garmin, METI/NASA, USGS. World Imagery: Maxar

0	First version	JORB	MOLI	16/04/21
REV	DESCRIPTION	GIS	CHK	DATE



PROJECT No.	1010577		
DESIGNED	JORB	APR.21	
DRAWN	JORB	APR.21	
CHECKED	MOLI	APR.21	
APPROVED		DATE	
		22/04/2021	

CLIENT	NZ STEEL		
PROJECT	RECONSENSING GLENBROOK STEEL MILL		
TITLE	NORTHERN YARD ACTIVITY OVER-VIEW		
SCALE (A3)	1:4,000	FIG No.	FIGURE A7
REV			0